



## **Javelin Odyssey** **Recommended** **Main Closing Loop Length**

**NOTE:** All instructions following are given with the assumption that the appropriate size main parachute is assembled into the container.

**(Reference the Javelin & Javelin Odyssey Container sizing chart)**

1. Hold your main #2 closing (sequence) flap up vertically so you can see the reversed Z-box stitch pattern inside the main container. (Fig 1)

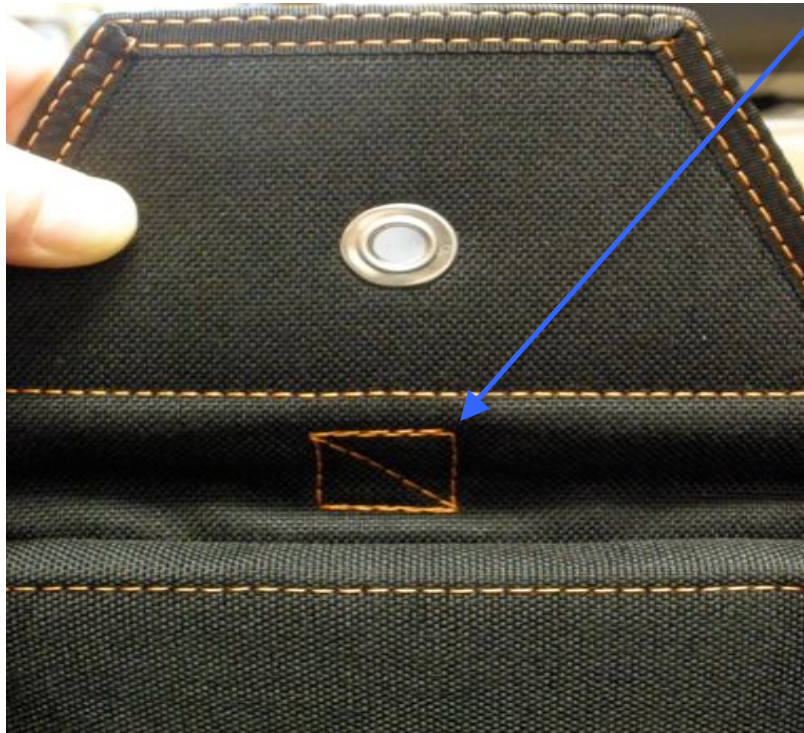


Fig. 1



## **Javelin Odyssey** **Recommended** **Main Closing Loop Length**

2. While holding the main #2 flap vertically, pull your main closing loop up vertically with a pull up cord threaded. The top of the main closing loop needs to fall within the reversed Z-box stitch pattern as shown in Fig. 2.



Fig. 2